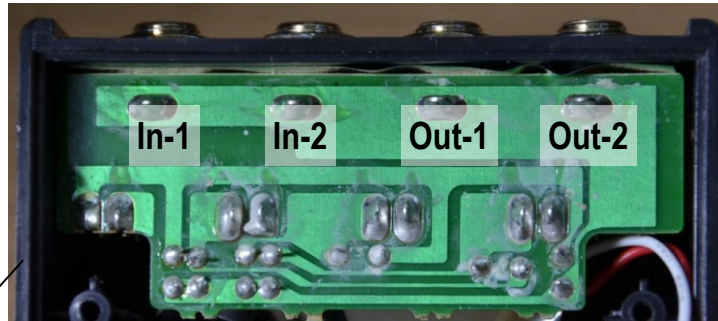


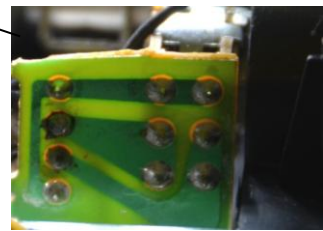
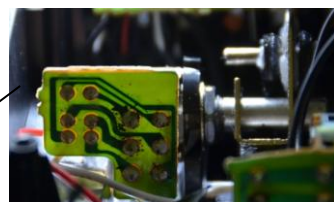
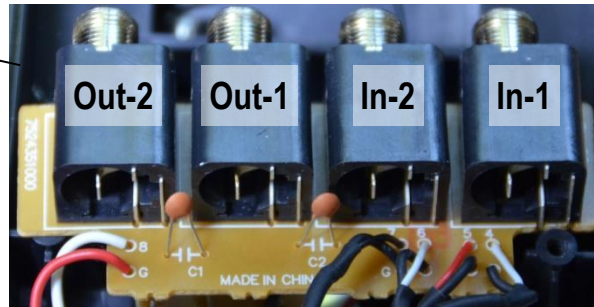
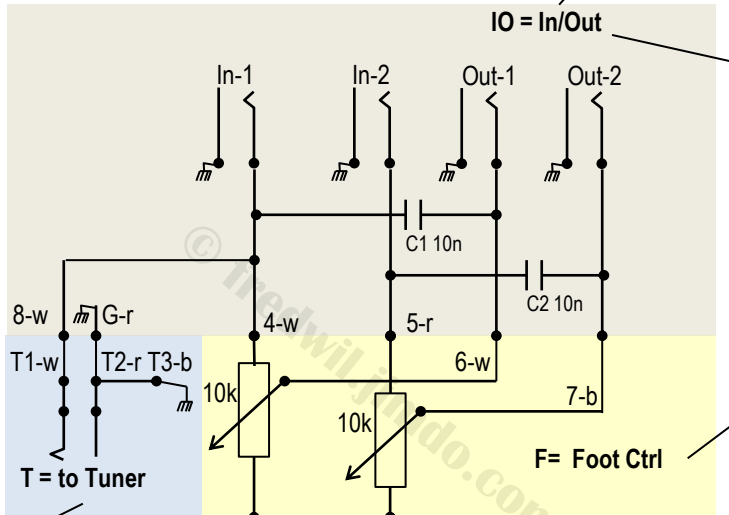
Boss FV-50L

The pedal contains 4 little Circuit Boards

- IO = Input/Output Board
- F = Foot Controller Board
- M = Minimum Volume Board
- T = Tuner Out Board



In-1/Out-1 and In-2/Out-2 are separate circuits and there are no contact pins to merge the two circuits.



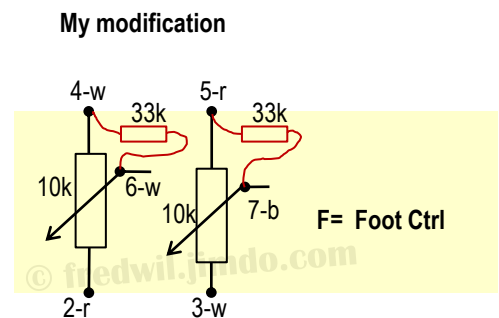
Tuner Out is parallel wired to In-1 (only).

If MinVol is at max. (50k), the Foot Ctrl runs between 60k / 60k = 1,0 ... 50k / 60k = 0,83 So the Volume reduction from max to min is 0,17, which was still too much for me..

F = Foot Ctrl

M = MinVol

In VolPed mode I don't apply MinVol = 0 (total mute)



If MinVol is at max. (50k), the Foot Ctrl runs between 60k / 60k = 1,0 ... 50k / 57,67k = 0,87 So the Volume reduction from max to min is 0,13, which is all right for me.

Expression Pedal mode is not affected by this Mod (0-10kΩ at Output Jacks, MinVol = 0)